

This document illustrates the function how to connect a MTDB board to Altera DE3 board. Users need to pay extra attention to the following three points:

1. The MTDB board can be connected to any of the HSTC connectors J1, J3, J5, and J7 on the DE3 board. Figure 1.1 shows the MTDB board is connected on DE3 board via J5 HSTC connector.

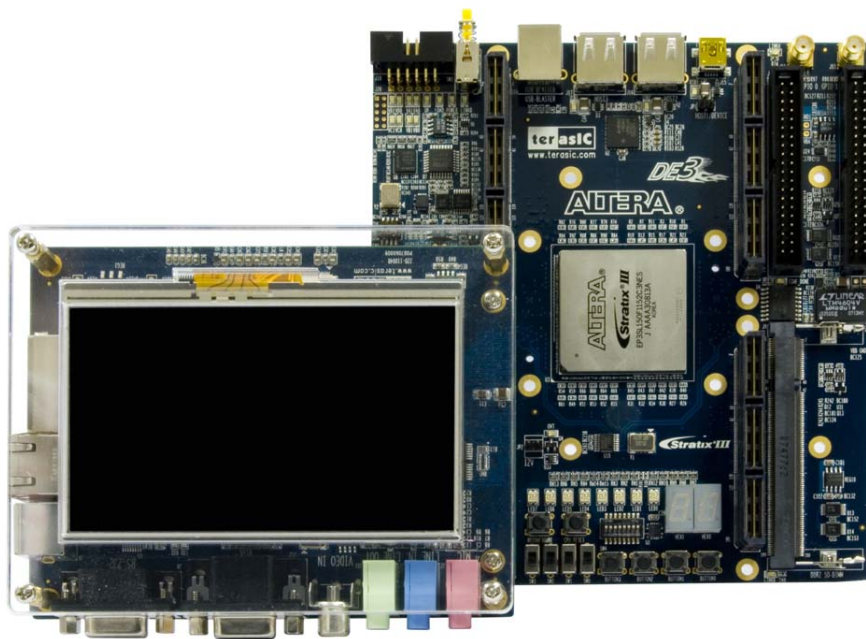


Figure 1.1 MTDB board is connected on J5 HSTC connector on DE3 board.

2. Before connecting a MTDB board with DE3 board, users need to find an adapter card named THDB-HFF from the DE3 package. The THDB-HFF is designed to connect two male-type HSTC/HSMC connectors. The MTDB board can be connected to a DE3 board only via THDB-HFF adaptor card. Figure 1.2 and Figure 1.3 shows the connection setup for the MTDB and DE3 board.

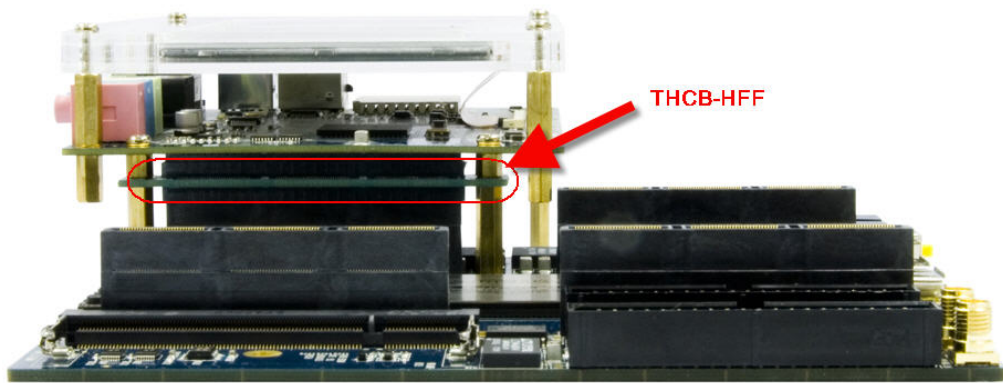


Figure 1.2 Connection setup for DE3 and MTDB board.

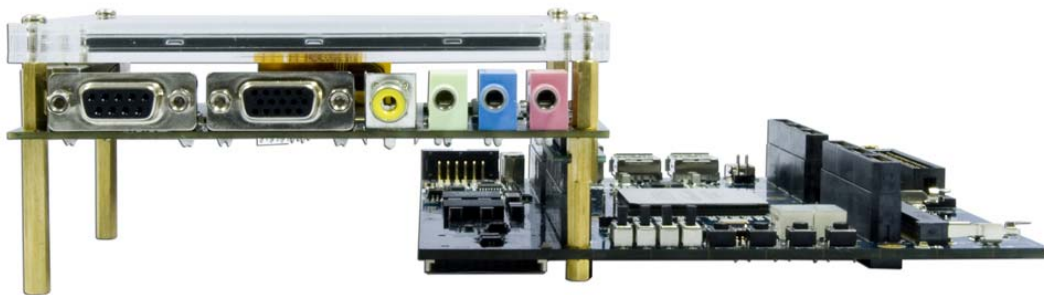


Figure 1.3 Connection setup for DE3 and MTDB board.

3. After connection setup is completed, users can use DE3\_System\_builder to create a Quartus II project for this connection. As shown in Figure 1.4, users can add MTDB board and DE3 board in the system area and establish a connection in between. A Quartus II project will be generated and located under <DE3\_System\_builder Installed Path >/ generated/ after “Finish” button is pressed. Please refer to Chapter 4 of DE3\_usermanual for more information about how to use DE3\_System\_builder.

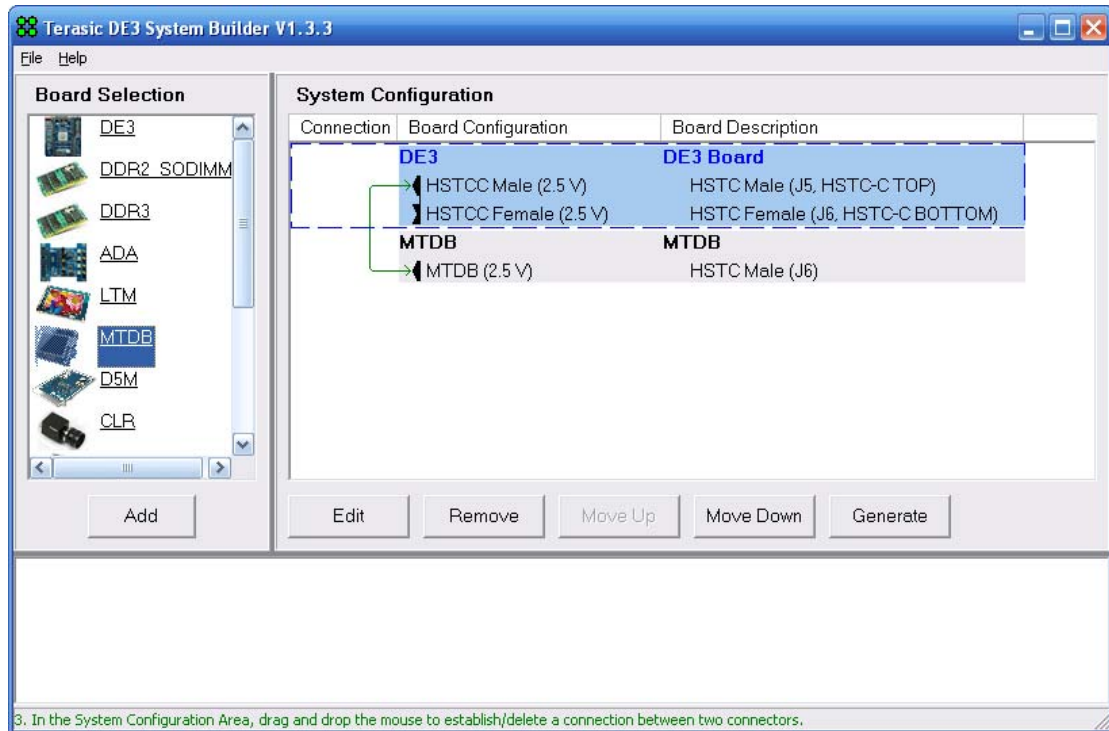


Figure 1.4 DE3\_System\_Builder setting for MTDB and DE3 board.